

# CERTIFICATE OF LOCATION OF GOVERNMENT CORNER

NORTH QUARTER Corner of Section 5, Township 107, Range 39, 5TH P.M.

STATE OF MINNESOTA, County of MURRAY

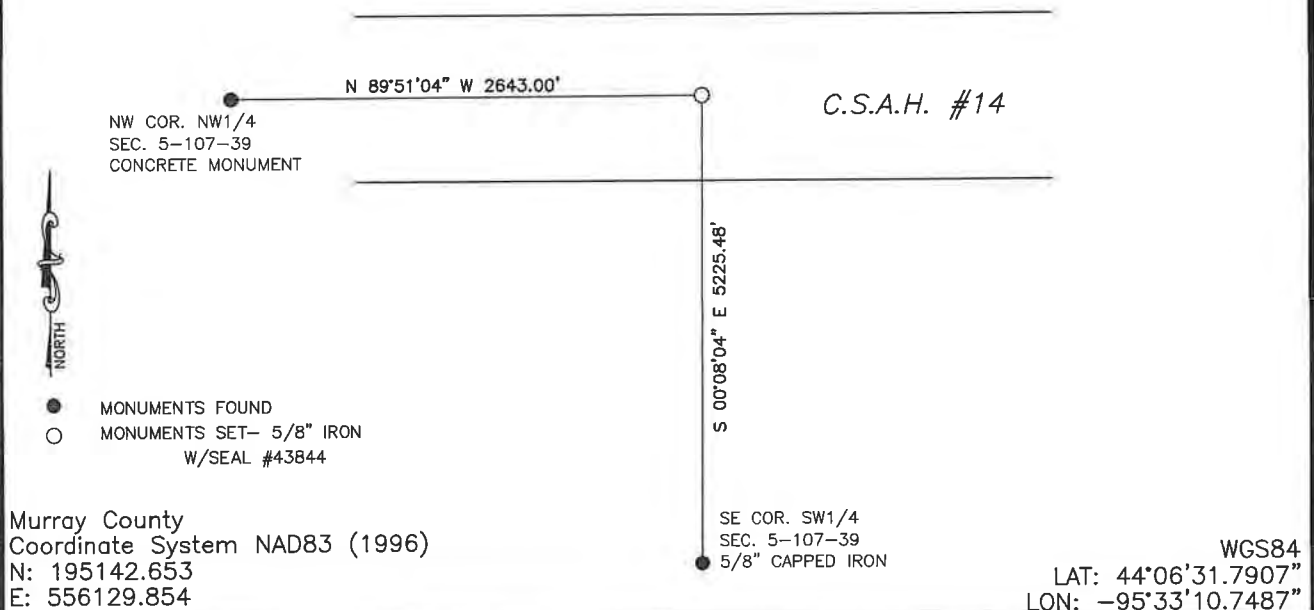
At the corner location shown on the sketch:

☒ On 4/3/2025 found a 3" Survey spike with seal #23008. Probed and hit stone.  
DATE

☐ left monument as found, ☐ lowered monument, ☒ removed monument (explain)

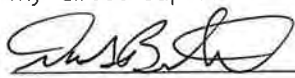
☒ On 4/3/2025 placed a 5/8" iron with seal #43844 in position of found survey spike.  
DATE

## SKETCH OF REFERENCE TIES



Statement of evidence relative to this corner location is on back of page.

I hereby certify that this document and the data contained herein was prepared by me or under my direct supervision.



Daniel L. Bueltel  
License No. 43844

6/19/2025  
DATE

JUN 27 2025



MURRAY COUNTY RECORDER

### Statement of Evidence

NORTH QUARTER CORNER SECTION 5, T107N, R39W OF THE 5th P.M.

In July of 1861, J.W. Myers surveyed the township lines.

In September of 1861, L. Brockmann subdivided the township.

A survey date October 6, 1906 notes a field stone located at the corner.

County Records from 1934 show a field stone located at the corner.

A corner certificate by Perry Zieske, LS #23008, dated November 4, 2008, notes he found a 12" x 8" stone and placed a 1" iron pipe with a yellow survey cap LS #23008 above the stone.

On April 4, 2025 Bueltel-Moseng Land Surveying searched the area with a metal locator and could not locate the pipe. We computed a position using the bearing and distance from the northwest corner of Section 5 as noted on Perry Zieske's 2008 corner certificate, dug by hand in that position to probe for the stone, while digging we dug up a 3" survey spike with seal #23008 that was not picked up by the metal locator. We probed at our computed position and hit the stone beneath, accepted the computed position and set a  $\frac{5}{8}$ " iron with seal #43844.